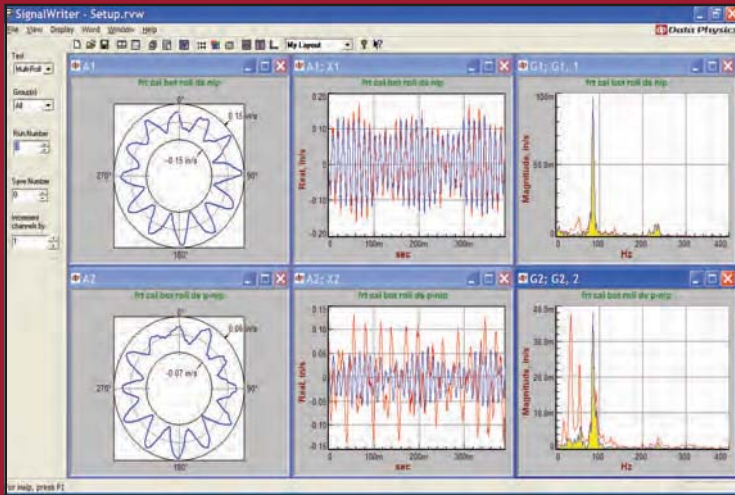


SignalWriter

Professional Report Generation

- Scalar
- Vector
- Matrix
- ACE
- Mobilyzer
- Savant



SignalWriter

SignalWriter provides interactive and automated connectivity with Microsoft Word for easy generation of highly professional reports. The immense task of acquiring data and making measurements is only one half of the problem facing test engineers. The other, typically underrated, is the task of interpreting and reporting on the findings from a completed analysis. SignalWriter let you easily step through vast measurement sets for review and interpretation. Reports are created to share with your colleagues or customers. Conclusions and recommendations for future action are prepared efficiently. SignalWriter is compatible with all Data Physics products including the SignalCalc and SignalStar families of analyzers and controllers. It is a single environment for easy review of data and a powerful suite of manual and automated reporting functions.

Browsing of Tests and Signals

SignalWriter provides an intuitive interface for selecting signals for display and reporting. While SignalCalc and SignalStar users will find the Signal Selector very familiar, several enhancements useful for reporting are included. Users may now select multiple tests for browsing through at any given time. This makes comparison of data across multiple tests effortless. Tests can be of any type offered in the analyzers and controllers. Furthermore, both analyzer and controller data may be viewed and reported on simultaneously, allowing unprecedented flexibility and ease of reporting for environmental test applications.

The Layout manager, a hallmark of the SignalCalc and SignalStar display repertoire, is also included with SignalWriter. Layouts already defined in tests are automatically read by SignalWriter when the test is selected in the project. Users may define additional layouts as necessary. Templates used to control the appearance and content of every signal type, are also automatically available for use. The arrangement of signals in a user specified order and layout may then be saved as a Project which can be later used with any future test or signal map.

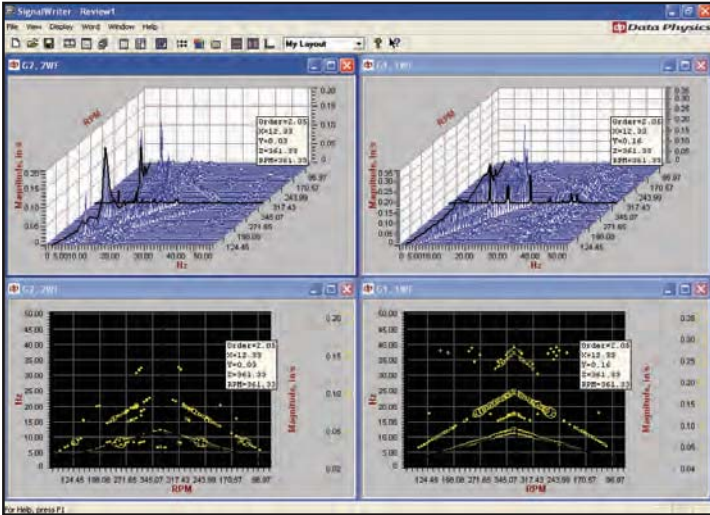
Convenient Selection of Runs, Saves and Channels

SignalWriter is designed specifically to efficiently review any number of data channels from relatively small tests to tests with hundreds of channels of data across multiple tests, runs and saves. A simple dialogue allows users to browse through multiple channels in a single run in a test, or view data from the same channel across multiple runs. Coupled with Layout Manager, the Run/Save selector acts as a multi-dimensional display matrix, all accessed with a single mouse click.

One-Click Report Generation

Report generation is made effortless by the flexible Microsoft Word interface, which starts by allowing users to launch Word from SignalWriter. Once Word is launched, users can manually transfer graphs to an open document using a variety of options all identified and operated by convenient icons. First, any active graph can be copied to Word. Next, all graphs in the active layout can be copied to Word, one after another, by a single touch. Finally, the entire layout, defined by unique location and relative dimensioning of the various graphs, can be transferred to the Word document.

Text boxes can also be inserted into the report from within SignalWriter with user specified font type and size. Useful test set up and signal information can be automatically embedded into a text box through an annotation dialogue.

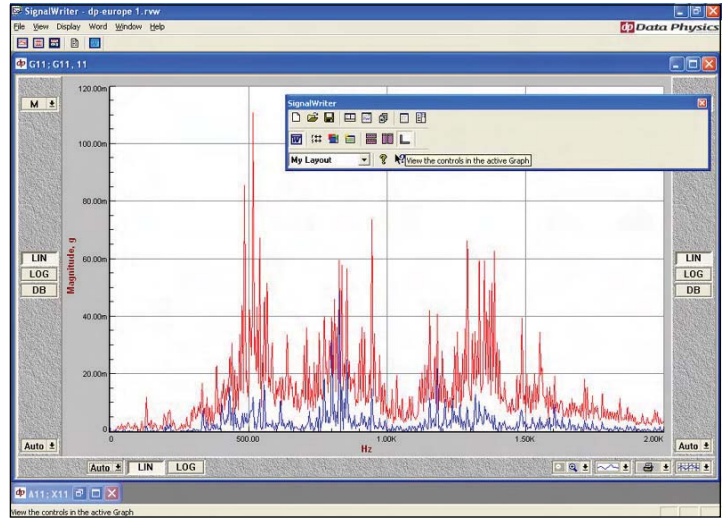


Graphs can be transferred into Word either as a metafile, bitmap or active control. The active control graph format allows anyone who opens the word document to use the graph formatting and cursor tools to gain the maximum information from the data.

Once Word document layouts have been created, they are immediately available for use as templates with future tests. The documents can include your company logo and any other relevant information.

Easy Access to Graph Controls

SignalWriter offers all the powerful graph attribute selections available in SignalCalc analyzers and SignalStar controllers. Right-clicking on any graph offers immediate access to the graph attributes menu. In addition to this feature, users may also employ the Active Graph Controls option, which is launched by an icon in the toolbar. This convenient tool provides users with the ability to modify the axis type for either axis on the graph to be either linear, log or dB through buttons available right on the graph itself. Users can also change the display zoom, cursor type, background grid and axis scaling control in a similar fashion as well as print the active graph or copy to clipboard.



Automated Report Sequencing

The steps described in the previous section can be completely automated using a Report Sequencer. Everything from loading a test and template and automatically looping through multiple runs, saves and channels (with user defined limits), to adding graphs to the selected Word template, is easily done with minimal user input. Once a report sequence has been saved, it can be recalled in the future for a further level of automation.

